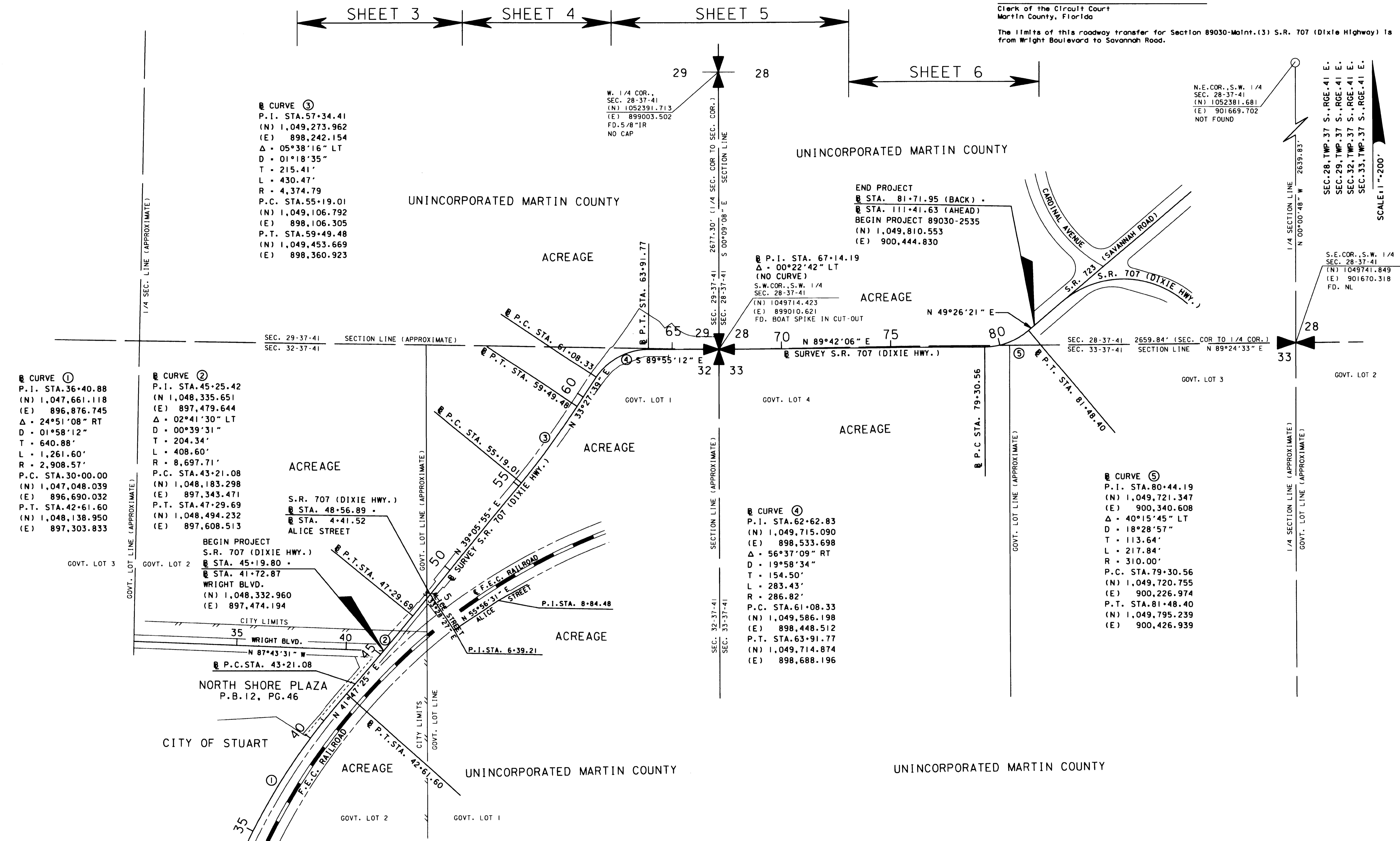


This right of way map when recorded is an instrument of conveyance, transferring in accordance with the Florida Statutes 337.29 all right, title, and interest of the Florida Department of Transportation in the road, street, highway, set forth on this map to the City of Stuart.

Recorded in Public Records of Martin County, Florida, this \_\_\_\_\_ day of \_\_\_\_\_, A.D. 2012, in Road Plot Book \_\_\_\_\_, Page \_\_\_\_\_.

Clerk of the Circuit Court  
Martin County, Florida

The limits of this roadway transfer for Section 89030-Maint.(3) S.R. 707 (Dixie Highway) is from Wright Boulevard to Savannah Road.



**③ CURVE ③**  
 P.I. STA. 57+34.41  
 (N) 1,049,273.962  
 (E) 898,242.154  
 $\Delta = 05^{\circ}38'16''$  LT  
 D =  $01^{\circ}18'35''$   
 T = 215.41'  
 L = 430.47'  
 R = 4,374.79  
 P.C. STA. 55+19.01  
 (N) 1,049,106.792  
 (E) 898,106.305  
 P.T. STA. 59+49.48  
 (N) 1,049,453.669  
 (E) 898,360.923

**① CURVE ①**  
 P.I. STA. 36+40.88  
 (N) 1,047,661.118  
 (E) 896,876.745  
 $\Delta = 24^{\circ}51'08''$  RT  
 D =  $01^{\circ}58'12''$   
 T = 640.88'  
 L = 1,261.60'  
 R = 2,908.57'  
 P.C. STA. 30+00.00  
 (N) 1,047,048.039  
 (E) 896,690.032  
 P.T. STA. 42+61.60  
 (N) 1,048,138.950  
 (E) 897,303.833

**② CURVE ②**  
 P.I. STA. 45+25.42  
 (N) 1,048,335.651  
 (E) 897,479.644  
 $\Delta = 02^{\circ}41'30''$  LT  
 D =  $00^{\circ}39'31''$   
 T = 204.34'  
 L = 408.60'  
 R = 8,697.71'  
 P.C. STA. 43+21.08  
 (N) 1,048,183.298  
 (E) 897,343.471  
 P.T. STA. 47+29.69  
 (N) 1,048,494.232  
 (E) 897,608.513

**④ CURVE ④**  
 P.I. STA. 62+62.83  
 (N) 1,049,715.090  
 (E) 898,533.698  
 $\Delta = 56^{\circ}37'09''$  RT  
 D =  $19^{\circ}58'34''$   
 T = 154.50'  
 L = 283.43'  
 R = 286.82'  
 P.C. STA. 61+08.33  
 (N) 1,049,586.198  
 (E) 898,448.512  
 P.T. STA. 63+91.77  
 (N) 1,049,714.874  
 (E) 898,688.196

**⑤ CURVE ⑤**  
 P.I. STA. 80+44.19  
 (N) 1,049,721.347  
 (E) 900,340.608  
 $\Delta = 40^{\circ}15'45''$  LT  
 D =  $18^{\circ}28'57''$   
 T = 113.64'  
 L = 217.84'  
 R = 310.00'  
 P.C. STA. 79+30.56  
 (N) 1,049,720.755  
 (E) 900,226.974  
 P.T. STA. 81+48.40  
 (N) 1,049,795.239  
 (E) 900,426.939

N.E. COR., S.W. 1/4  
 SEC. 28-37-41  
 (N) 1052381.681  
 (E) 901669.702  
 NOT FOUND

S.E. COR., S.W. 1/4  
 SEC. 28-37-41  
 (N) 1049741.849  
 (E) 901670.318  
 FD. NL

SCALE 1" = 200'

SEE SHEET 1 FOR GENERAL NOTES, CERTIFICATIONS, LEGEND, ETC.

THIS MAP IS NOT A SURVEY KEY SHEET

FROM WRIGHT BLVD. TO SAVANNAH ROAD

RIGHT OF WAY MAP	FLORIDA DEPARTMENT OF TRANSPORTATION SURVEYING AND MAPPING	APPROVED BY	DATE	BY			DATE	FED. PROJ. N/A	SECTION 89030-MAINT.(3)	MAPS PREPARED BY: LB* 696 KIMLEY-HORN AND ASSOCIATES	DATA SOURCE: SEE SHEET 1		
		<i>[Signature]</i>	08/03/12	PRELIM	L.CEFOLIA	05/17/02	FINAL					T.BROWN	07/31/12
		DISTRICT SURVEYOR		REVISION	BY	DATE	REVISION	BY	DATE	STATE ROAD NO. 707 (DIXIE HIGHWAY)	MARTIN COUNTY	F.P. NO. N/A	SHEET 2 OF 6